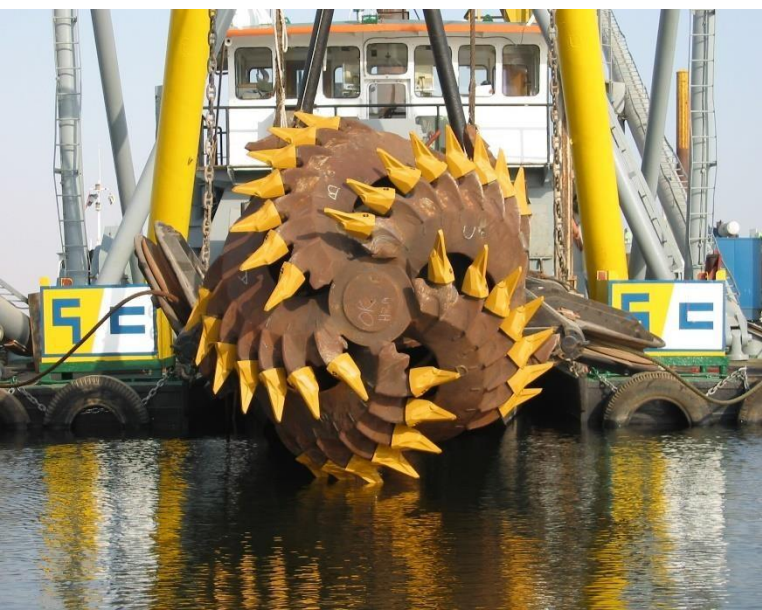




GULF COBLA (LLC)

DREDGING & LAND RECLAMATION

MARINE CHARTER - SURVEY SERVICES



HEAD OFFICE

Gulf Cobla L.L.C.
Jebel Ali Industrial Area 2
Dubai, United Arab Emirates

BRANCH OFFICES

Abu Dhabi, United Arab Emirates
Hillegom, The Netherlands

CONTACT DETAILS

Tel. +971 4 803 7777
Fax +971 4 880 4295
gc-info@gulfcobla.com
www.gulfcobla.com

www.gulfcobla.com

Gulf Cobla

"Professional and flexible"



Gulf Cobla (L.L.C.) is an international dredging company, located in Dubai and focused on dredging and land reclamation works in the Middle East and parts of South Asia. Gulf Cobla operates a fleet of Cutter Suction Dredgers and has a very strong track record of successfully completed projects in the region.

Our services

Gulf Cobla's dredging services range from capital dredging, maintenance dredging, rock dredging, trench dredging, foundation dredging to beach replenishment and land reclamation works. Due to the high accuracy of our equipment and the experience of our dredge operators, Gulf Cobla is specialized in dredging along existing structures and executing complicated dredging projects as well as undertaking large production projects.

Committed

Management and operatives are highly committed, and therefore all actively involved in areas such as safety, environment and quality by means of providing and attending dedicated courses on quality, safety, STCW and other related subjects such as firefighting, first aid etc..

Accredited

All operations, from tender, to survey, to project execution are constantly being reviewed and have been used as a framework for the company's ISO 9001:2008 accredited management system.

Gulf Cobla is able to react swiftly to market requirements and specific client requests whilst retaining a high level of quality and professionalism.

Association

Whilst Gulf Cobla is mainly focused on Cutter Suction Dredging operations, the company is regarded as a professional player in the global dredging market, affiliated to well-known global dredging organisations such as the International Association of Dredging Companies [IADC] and the Central Dredging Association [CEDA].





Cutter Suction Dredger “Khaleej Bay”

Cutter Suction Dredger “Khaleej Bay” is Gulf Cobla’s largest dredger. She has 7,000 Hp total installed power, 1,250 Hp Cutter power and two pumps with a 650 mm discharge pipeline.

Company history

"Efficient and cost effective dredging solutions since 1977"



Gulf Cobla was formed in 1977 as a limited liability company by decree of His Highness, Sheikh Rashid bin Saeed Al Maktoum, late Ruler of Dubai, with the objectives of carrying out dredging, reclamation and associated marine operations.

Founding Members

The Founding Members, Costain (British) / Blankevoort (Dutch) and Dubai Transport Company, were already successfully associated in the joint execution of dredging and reclamation works in the Middle East from 1965.

Major Projects

Gulf Cobla has historically been involved with a substantial number of major civil marine projects involving the interface between land and sea, mainly in the United Arab Emirates, Saudi Arabia and Bahrain.

Since its formation Gulf Cobla has been specialized in dredging related activities and some 400 Million m³ in varying grades and consistencies of materials, typical to the Middle East, was dredged in different geographical locations.

Jebel Ali Port

One of Gulf Cobla's first projects and their biggest project to date was the dredging of Mina Jebel Ali Port in Dubai, United Arab Emirates, the largest man-made port in the world, on a contract awarded by the late His Highness Sheikh Rashid Al Maktoum, then Ruler of Dubai.

For this project Gulf Cobla built a fleet of dredgers, including the only, successfully working, cutter island "Al Wasl Bay".

The dredging works for Jebel Ali Port alone consisted of dredging more than 100 Million m³ sand and rock.





Where we are now

*"A Dubai based
dredging company,
operating internationally
in Middle East and
South Asia"*

Today Gulf Cobla is a medium sized, Dubai based, dredging company that is operating a healthy fleet of Cutter Suction Dredgers and support equipment throughout the Middle East, GCC countries and parts of South Asia. In the last decade Gulf Cobla have expanded their business ventures to several new destinations like the Maldives, Iraq and Jordan.

Shareholders

Gulf Cobla, a local, Dubai based company owned by two Dubai based shareholders, DUTCO INVESTMENT LLC (51%) and ADVANCED DYNAMICS INVESTMENTS (49%).

This association of two large company groups, very active in the fields of building, road construction, haulage, civil engineering and marine construction (amongst others) and both with strong regional ties, places considerable opportunity and resources at the disposal of Gulf Cobla.



Geographical locations

Whereas Gulf Cobla started with projects mainly in the United Arab Emirates, Bahrain and Saudi Arabia, the list is now grown to include countries like Oman, Maldives, Iraq, Jordan and Qatar.

Possibilities are likely that other countries will be added to this list in the near future.

Fleet

Gulf Cobla owns six Cutter Suction Dredgers, a booster station and all auxiliary support equipment a dredging project would require.

In line with its heritage, dredgers are named after neighbourhoods in Dubai succeeded by the maritime word "Bay".

All self-propelled auxiliary marine vessels are named after fishes common in the world's oceans and also followed by "Bay".



Gulf Cobla people

"Our most valuable assets"



Personnel are considered the key resource of Gulf Cobla and the company is highly focused on maintaining high welfare and wellbeing standards for its employees.

Gulf Cobla gives special attention to subjects as safety, quality and environmental awareness. Based on the yearly employee evaluation, the training requirements for every individual employee are reviewed.

Training

Gulf Cobla's employees undergo appropriate occupational training towards their field of operation, ranging from safety and first aid to Cutter Suction Dredger simulation training and management courses. Naturally, awareness toward Gulf Cobla's Quality, Health, Safety and Environmental management systems has continuous attention throughout the company.

Committed

Gulf Cobla's employees form a team of professionals of European, Arab and Asian nationalities, all with considerable experience in international dredging, reclamation and other marine operations.

Experienced

Gulf Cobla is proud to say that some of their senior personnel have been with Gulf Cobla since its inception. Naturally this can only be achieved if the relation between Gulf Cobla and its employees remains excellent throughout all levels of the organisation.



Dutch, Arab and Asian

Gulf Cobla has strong, well established roots in the Dutch dredging society and there are several Dutch dredging professionals employed throughout Gulf Cobla, creating a proven mix of Dutch, Arab and Asian employees.





Cutter Suction Dredging operations

Productive and efficient dredging works require a wide range of auxiliary equipment to assist in all dredging related side activities.



Cutter Suction Dredgers

"A fleet we are proud of"

Gulf Cobla operates a fleet of Cutter Suction Dredgers and auxiliary support equipment. Due to following strict overhaul and docking schedules, all equipment operated by Gulf Cobla is in a perfect state of maintenance.

Khaleej Bay

This is the flagship of Gulf Cobla's current fleet. This sturdy Damen / Vosta design Cutter Suction Dredger was built locally in 2004. With her 1,250 Hp cutter power and 7,000 Hp total installed power, there is not much that cannot be dredged with this dredger.

- ✓ 7,000 HP
- ✓ 650 mm pipeline
- ✓ 18 mtr dredging depth

Deira Bay

The Deira Bay is a medium size, shallow draft Cutter Suction Dredger, designed to dredge soft to hard materials typical for the Middle East region. Gulf Cobla is proud of the fact that this dredger has already been performing for more than three decades.

- ✓ 3,500 HP
- ✓ 650 mm pipeline
- ✓ 12.5 mtr dredging depth

Hamriyah Bay

This dismountable Beaver 1600 increases the flexibility of Gulf Cobla's dredging fleet. Due to the possibilities to dismantle this dredger and transport her by road, even in-land destinations can now be reached with Gulf Cobla's dredging equipment.

- ✓ 1,600 HP
- ✓ 500 mm pipeline
- ✓ 14 mtr dredging depth

Baniyas Bay

This 2006 built IHC Beaver 3800 has been added to Gulf Cobla's fleet in 2012. This multipurpose dredger is

perfectly suited for optimum productions in a sandy environment and able to dredge cemented soils and weak rock / sandstone types of soil as well.

- ✓ 3,800 HP
- ✓ 650 mm pipeline
- ✓ 16 mtr dredging depth

Garhoud Bay

Like her sister ship Deira Bay, the Garhoud Bay has been used under the most demanding conditions. Both

dredgers have electrical driven cutters and are equipped with spud carriers and anchor booms.

- ✓ 3,500 HP
- ✓ 550 mm pipeline
- ✓ 10.5 mtr dredging depth

Jumeirah Bay

This latest edition to Gulf Cobla's fleet was completely refurbished and overhauled in 2014. This is a

dismountable dredger from the IHC Beaver line as well, which makes her very flexible in operations and mobilisation possibilities.

- ✓ 1,200 HP
- ✓ 450 mm pipeline
- ✓ 10 mtr dredging depth



Palm Jumeirah Tunnel

Dredging of the tunnel trench between the spine and the crescent of Palm Jumeirah.

Auxiliary marine equipment

"For efficient dredging works"



A wide range of auxiliary marine equipment is available for Gulf Cobla's dredging fleet. Auxiliary marine equipment ranges from survey vessel, multicats, pushycats and booster stations to specialised custom built dredging related equipment.

Vessels

Gulf Cobla uses a wide range of vessels to support its dredging activities. These vessels are used for positioning the dredge spread, for lifting works, for marine towage activities, for pipeline

works, for crew change, etc. These vessels are essential for efficient and productive dredging operations.

Boosters

Where pumping distances exceed the distance a dredger is designed for, additional booster stations can be installed in the pipeline route.

Gulf Cobla operates marine and land based booster stations, each adding some 2,500 Hp extra pumping power to the dredge mixture transport.

Custom built equipment


Gulf Cobla has their Head Office in Dubai and runs a modern workshop from here. The main purpose of the workshop is the maintenance of all Gulf Cobla's assets. However, whenever

there are specific demands from projects, this workshop is able to provide almost any custom build design.

A recent example is the custom built dredger "Marina Bay" based on a DOP pump system with a hydraulic power pack. This dredger was built to dredge underneath low structures like bridges and platforms.

Another example is the 35T crane barge that is now transformed in a 500Hp self-propelled multicat, equipped with an 8T crane and an optional 35T A-frame.





By placing dredged material hydraulically and spreading material with bulldozers, the main compaction criteria for reclamation works can already be met.

Land reclamation



Land based equipment

"The finishing touch"

Soil dredged from offshore areas is pumped through a network of pipelines before being discharged in a reclamation area. Once this material is discharged, land based machinery is used to spread and compact the material.

Quality

As machines are being used in sea water where the sand is acting as sandpaper and engines are always running on maximum performance, sturdy equipment is a must for Gulf Cobla. Hence Gulf Cobla only uses high quality equipment from well-known brands throughout their operations.

Earth moving equipment

For spreading and compacting the discharged material, bulldozers are used in the discharge areas.

All Gulf Cobla's bulldozers have low ground pressure tracks (LGP) enabling them to be productive in swampy conditions and limiting the risks of bogging down of the bulldozers.

For on-site transport of pipelines and items, wheel loaders are commonly used. Gulf Cobla's wheel loaders are all equipped with a cut bucket for pipeline transport works.

On a dredging project, excavators are in use as all-round assistance tools. Excavators can be used for bunding and earth moving activities as well as

lifting and occasionally even for transport of items.

Mobile workshop

To support the equipment on site, Gulf Cobla runs fully equipped mobile, container type works shops. From these workshops all standard maintenance activities on earthmoving equipment can be undertaken.





Canal dredging works

Gulf Cobla has created kilometres of canals, ports and water ways for commercial and leisure navigation purposes.

Hydrographic survey

"In support of Gulf Cobla's dredging and land reclamation activities"



Topographic and hydrographic surveys are a key part of dredging and reclamation operations and Gulf Cobla has always been a self-provider for the dredging and reclamation related surveys works.

RTK DGPS Multibeam

Survey practices have evolved during the past 2 decades from hand sounding leads (which are still being used widely) to single / dual frequency and multi beam echosounders for water depth measurements and from total positioning systems to state of the art Real Time Kinematic (RTK) Differential Global Positioning Systems (DGPS), which gives an instant position with sub-centimeter accuracy.

Motivated staff

Valued, experienced and motivated staff is the key ingredient of Gulf Cobla's successful survey projects. Surveyors have gained extensive experience using the above instrumentation and Gulf Cobla continues to upgrade and update their survey assets on a regular basis.

PDS2000 Survey software

Gulf Cobla's survey team is well experienced with hydrographic survey works and related software.

All survey data is gathered by using PDS2000 survey acquisition software from Reson B.V. in the Netherlands.

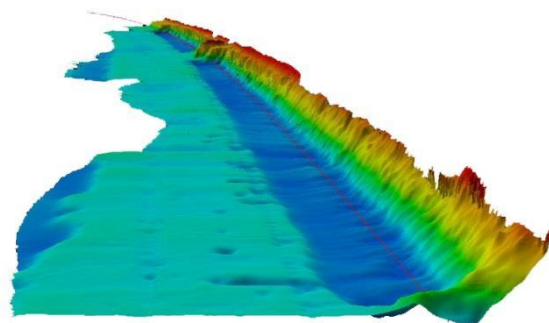
PDS2000 is also used to process the data (error correction for soundings, heave pitch and roll corrections and/or tidal input), to interpolate the gathered depth data in a full covered digital terrain model, to produce CAD charts and to calculate volumes between different surveys.

Data integration

Obtained survey data can be directly integrated on board of Gulf Cobla's dredgers. All dredgers are equipped with Reson's dredge monitoring software. Via this software dredger movements in relation to the seabed levels can be viewed in real time.

Survey vessels

Gulf Cobla has two fully equipped, shallow draft, survey vessels which can be deployed for hydrographic survey activities.





Reclamation and shore protection works in the Maldives

Gulf Cobla has been active in the Maldives since 2010 and formed a local setup with their partners Tennssoor Holding. The company completed several airport, residential and resort reclamation projects including shore protection works such as sheetpiling, rock works and geobag installation.



www.gulfcobla.com

For more information, please
contact Gulf Cobla's office.

+971 4 803 77 77
gc-info@gulfcobla.com